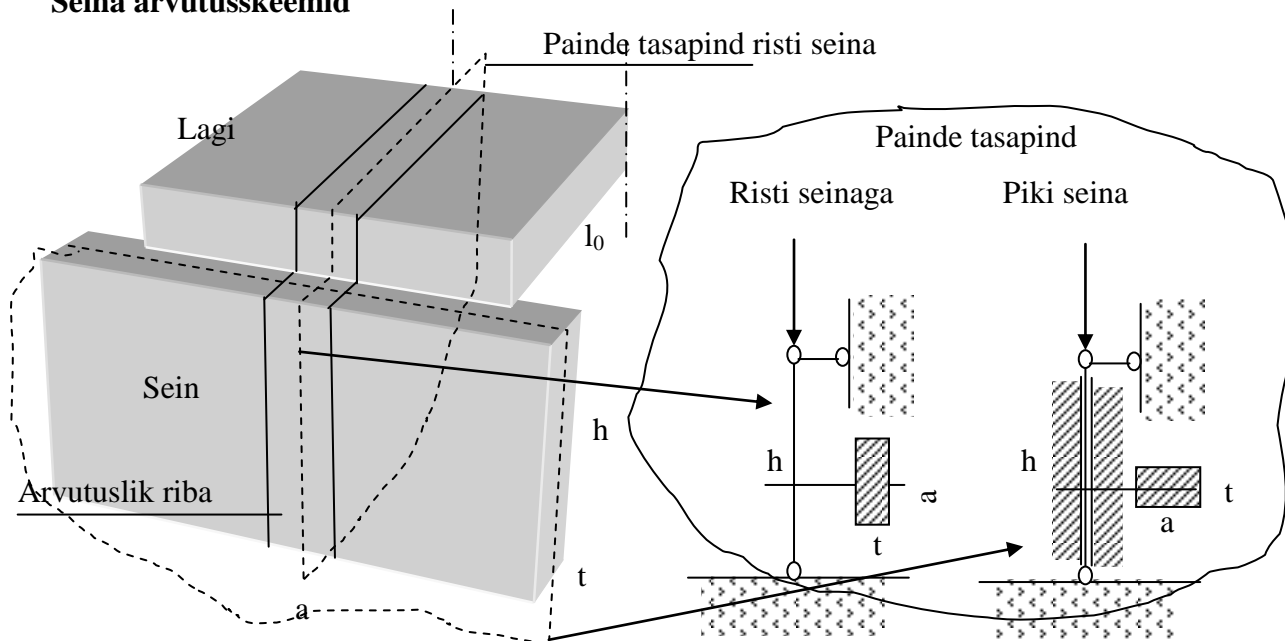
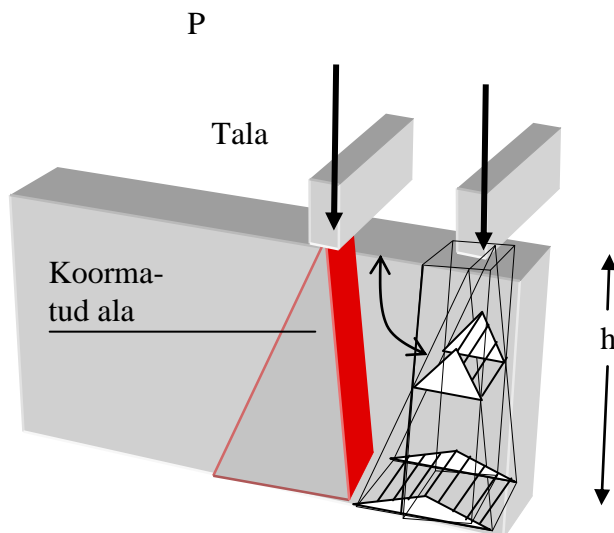
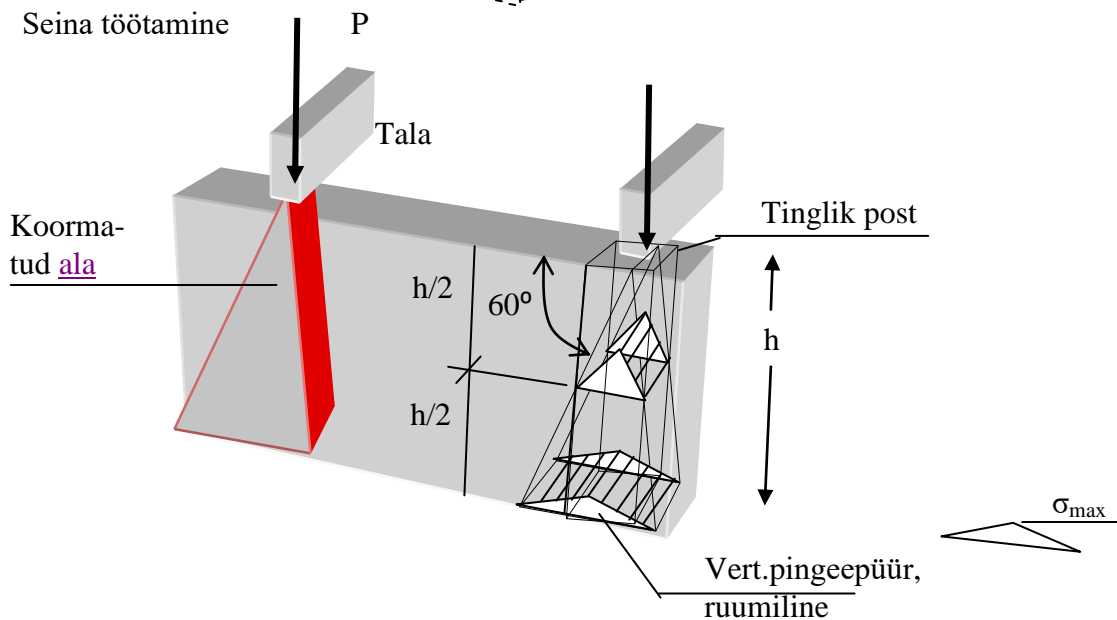


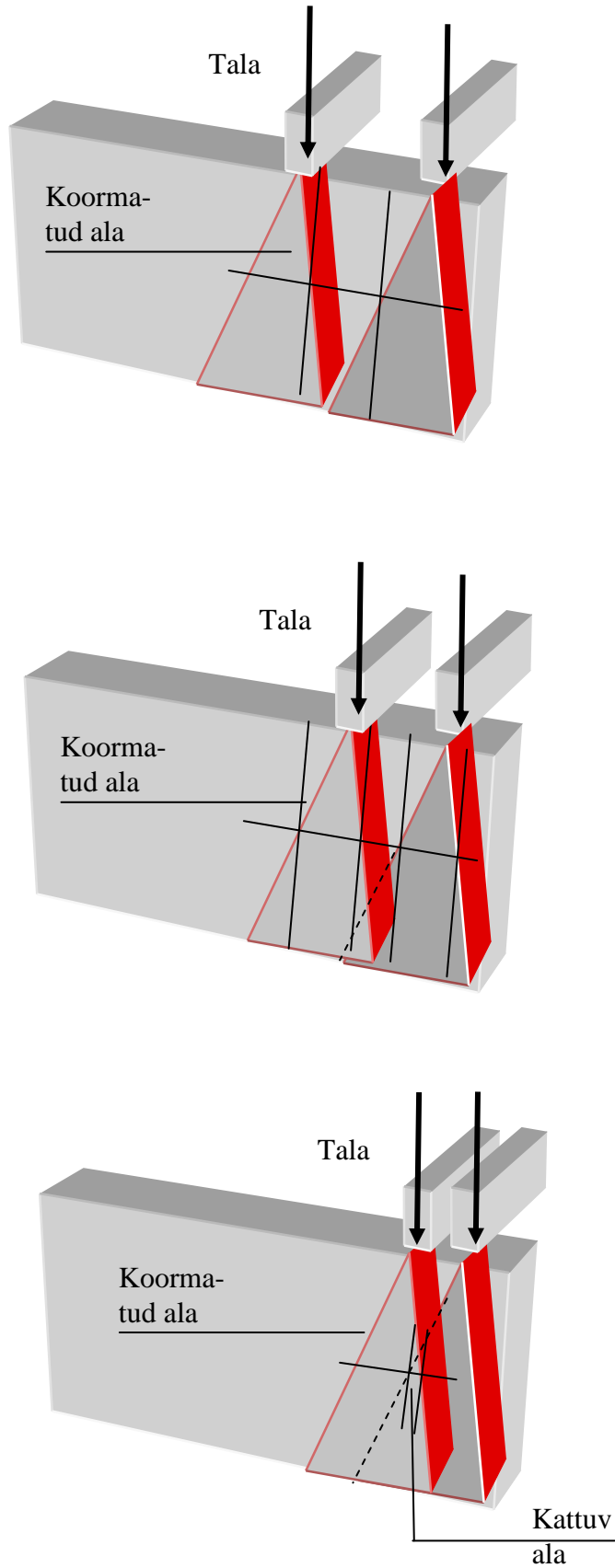
Seina arvutuskeemid



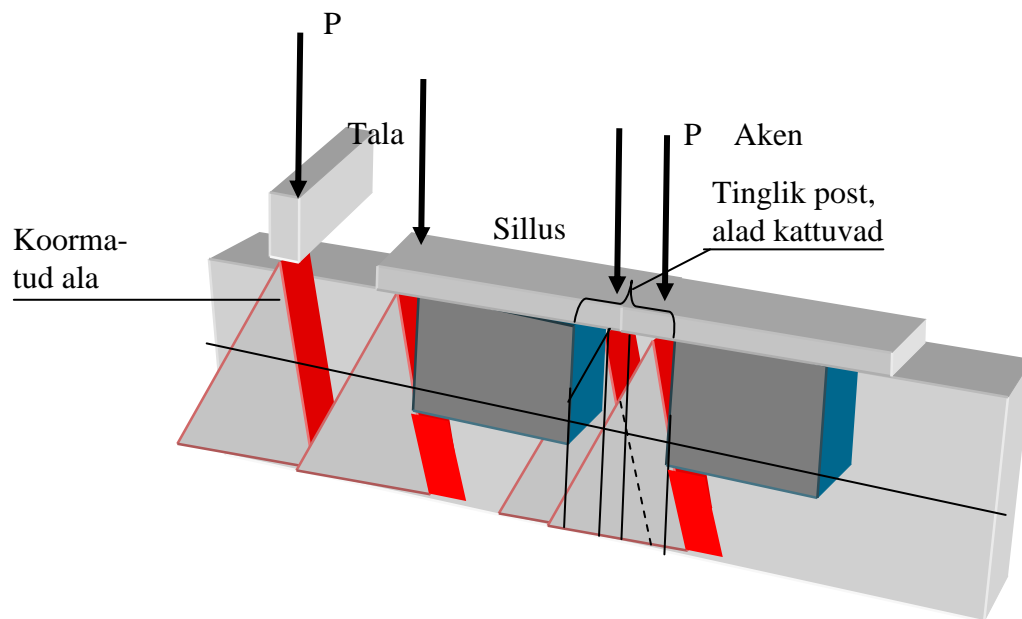
Seina töötamine



Alade osaline kattumine -

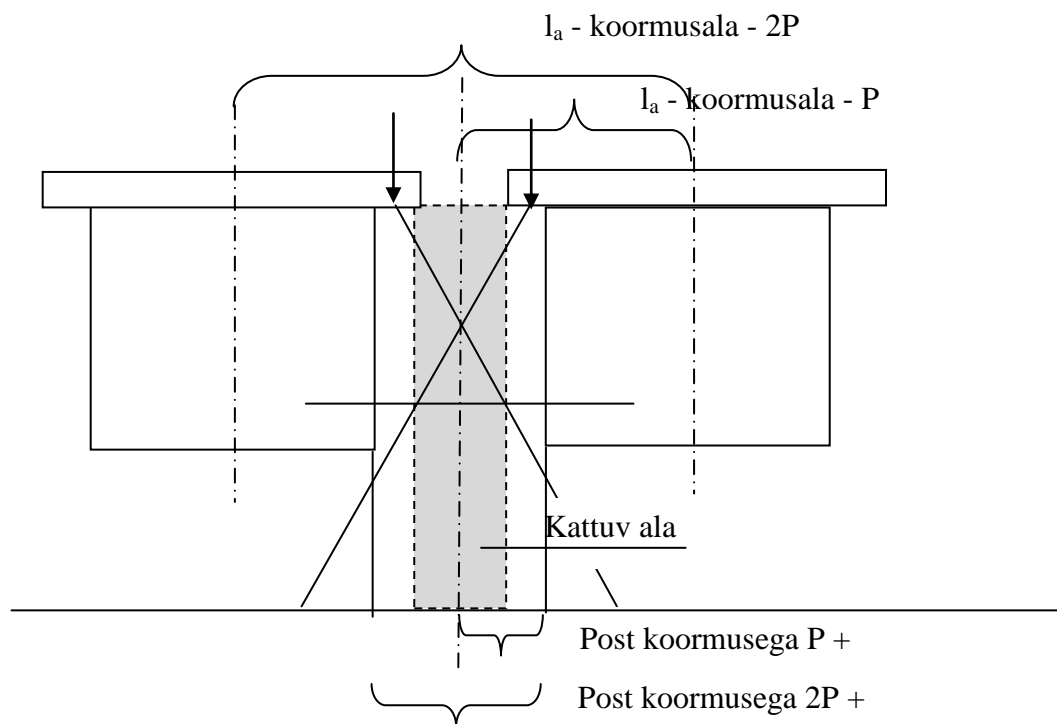


Avade arvestamine -

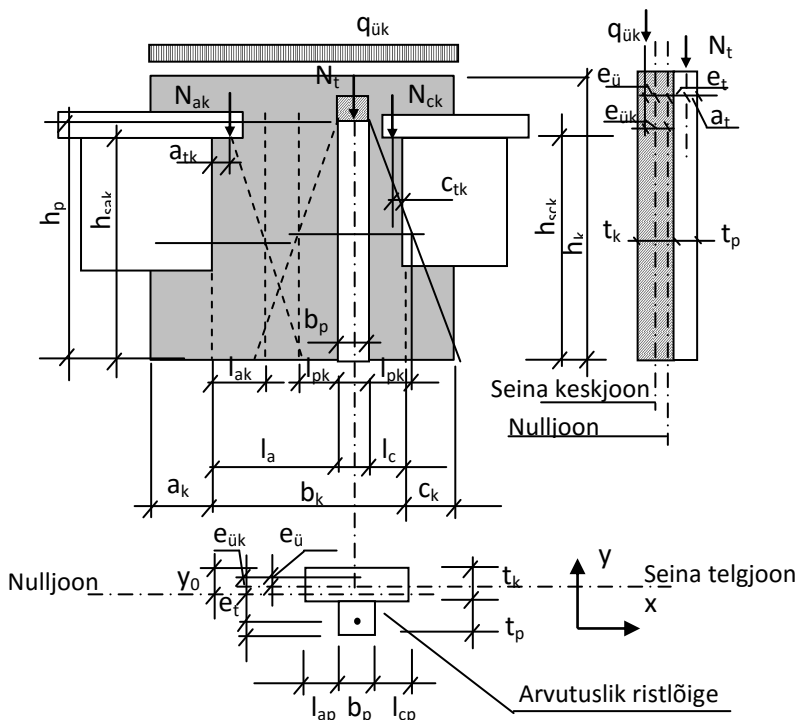


Tinglik post on terve aknavahe koormusega $2P$ või pool aknavahet koormusega P .

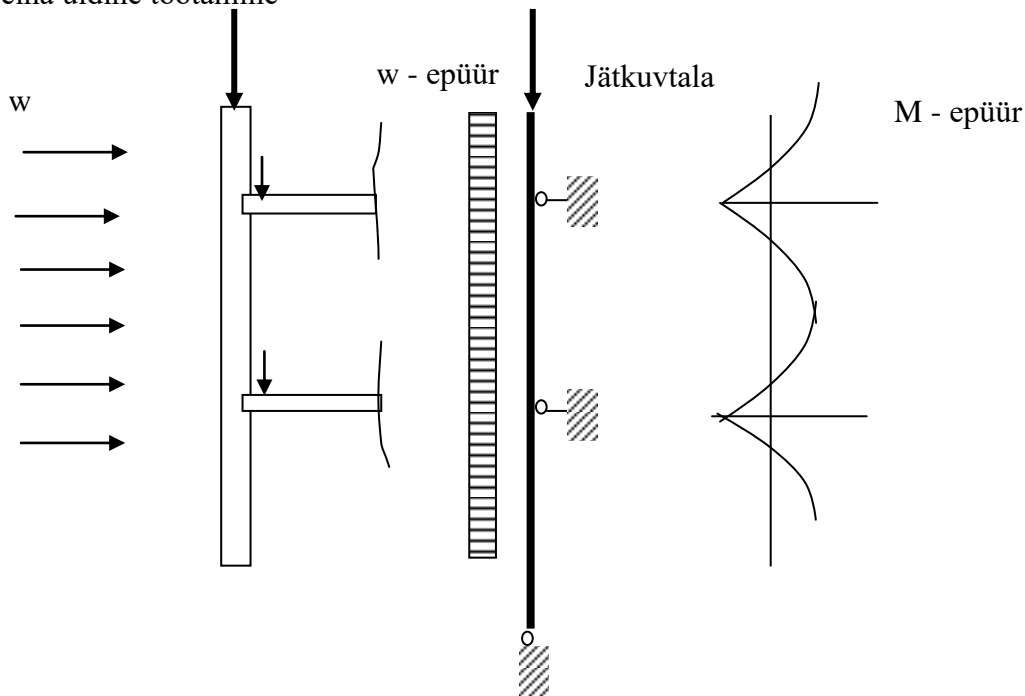
P - silluse toereaktsioon + koormus posti vabast alast.



Pilastriga seina arvutuskeem –

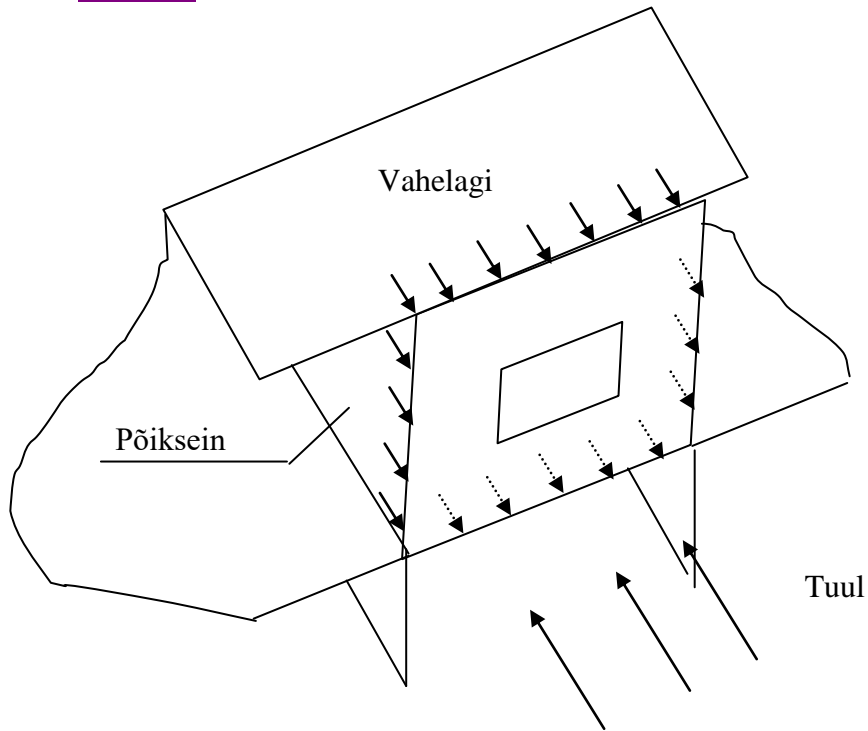


Seina üldine töötamine



Horisontaaltoe annavad põikseinad

Koormuse vastuvõtt välisseinal



Põikseina ja vahelae töötamine

